



APP.	REVISIONS

SOUTHWEST HOUSTON
REDEVELOPMENT
AUTHORITY
TIRZ 20

CobbFendley

 TIRZ Firm Registration No. F-274
 TIRZ Firm Registration No. 10467
 13430 Northwest Freeway, Suite 1100
 Houston, Texas 77040
 713 452 3242 | fax 713 452 3262
 www.cobbendley.com

JOB NO. 2015-003-01

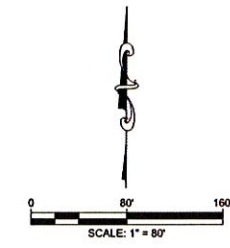
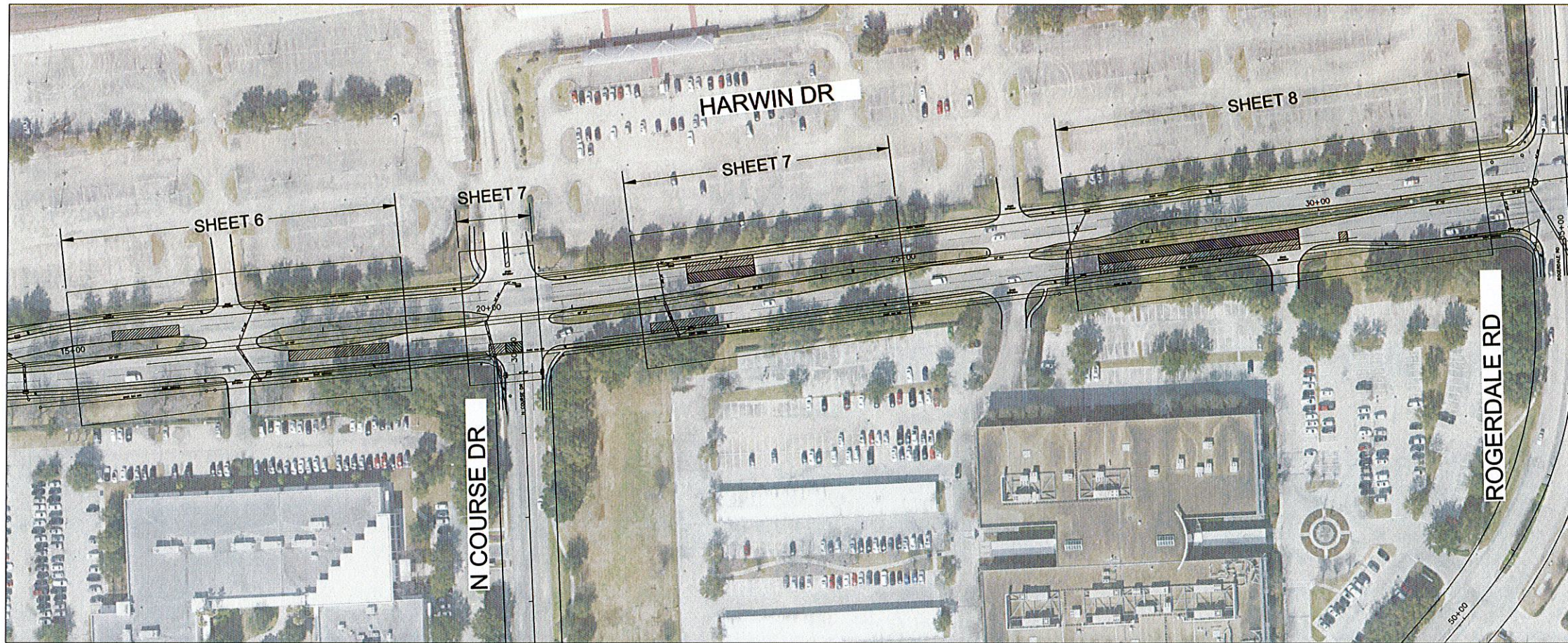
PANEL REPLACEMENT/PAVEME

OVERALL PROJ

NOTE: CITY SIGNATURES VALID FOR 1
AFTER DATE OF SIGNATURES

CITY OF HOUSTON
HOUSTON PUBLIC WORKS

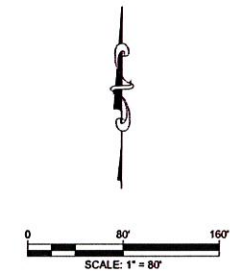
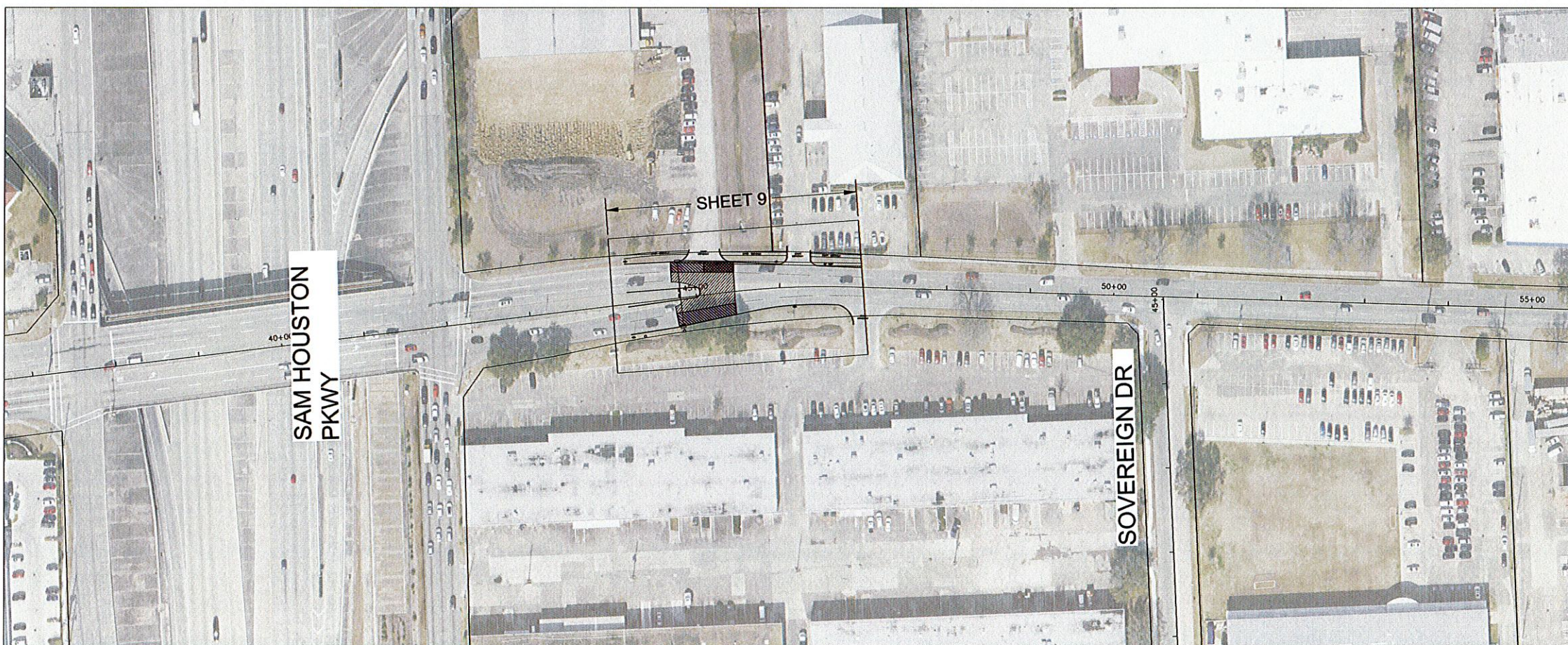
WATER	STORM
WASTEWATER	FACILITY
STORM	HOUSTON
TRAFFIC/STREET & BRIDGE	TRANSPEC OPERATE
FILE NO:	FOR CITY OF



LEGEND	
	PHASE 1 - PROPOSED FULL DEPTH BASE REPAIR CONCRETE PAVEMENT (FDBR) PROPOSED HIGH EARLY STRENGTH CONCRETE
	PHASE 2 - PROPOSED FULL DEPTH BASE REPAIR CONCRETE PAVEMENT (FDBR) PROPOSED HIGH EARLY STRENGTH CONCRETE
	PHASE 3 - PROPOSED FULL DEPTH BASE REPAIR CONCRETE PAVEMENT (FDBR) PROPOSED HIGH EARLY STRENGTH CONCRETE
	REMOVE AND REPLACE EXIST. 6" CONCRETE CURB
	EXISTING STORM/SANITARY SEWER MANHOLE
	EXISTING STORM INLET
	EXISTING FIRE HYDRANT
	EXISTING POWER POLE
	EXISTING LIGHT POLE
	CONTRACTOR SHALL MATCH EXISTING PAVEMENT ELEV. AT SAWCUTS LINES, EXPANSION JOINTS, AT GUTTER LINES & LOW POINT OF EXIST. INLETS.
	INLET PROTECTION BARRIER (SEE DTL. ON SHT. 39)

- NOTES**
- CONTRACTOR SHALL SAWCUT THE PERIMETER OF THE REPAIR LIMITS AS SHOWN ON PLANS. REMOVE THE CONCRETE SLAB AND DAMAGED BASE IF NEEDED. DRILL HOLES FOR LONGITUDINAL AND TRAVERSE THE BARS OR DOWEL BARS. PROVIDE LONGITUDINAL AND TRAVERSE STEEL CONTINUITY. PLACE AND FINISH CONCRETE AND RESTORE EXISTING JOINTS.
 - CONTRACTOR SHALL DETERMINE THE EXIST. GRADE PATTERN AND SLOPES BEFORE PAVEMENT REMOVAL AND RESTORE TOP OF PAVEMENT TO THE SAME SLOPES AND PATTERNS.
 - HATCHED AREAS REPRESENT THE LIMITS OF PAVEMENT REMOVAL AND INSTALLATION OF NEW REINFORCED CONCRETE PAVEMENT.
 - CONTRACTOR TO MAINTAIN POSITIVE DRAINAGE TO EXISTING INLETS AT ALL TIMES.
 - PANEL REPAIR SHALL EXTEND TO THE NEAREST EXISTING JOINT UNLESS OTHERWISE SPECIFIED IN PLANS.
 - CONTRACTOR SHALL MAINTAIN ACCESS TO DRIVEWAYS.
 - PAVEMENT MARKINGS SHALL BE IN ACCORDANCE WITH CURRENT CITY OF HOUSTON PUBLIC WORKS PAVEMENT MARKING DETAILS.
 - PANEL REPLACEMENT SHALL INCLUDE REPLACEMENT OF IMPACTED CURBS AND GUTTERS.
 - ALL PAVEMENT PANELS SHALL HAVE A MAXIMUM OF JOINT SPACING OF 20 FEET.
 - ALL EXISTING MANHOLE COVERS/FRAME ELEVATION LOCATED WITHIN PANEL REPLACEMENT SHALL MATCH NEW PAVEMENT FINISHED ELEVATION. (SEE DTL. SHT. 44)
 - PLACE 1" BLOCK SOO AT BACK OF PROPOSED CURB.
 - UPON REMOVAL OF EXIST. CONC. PAVEMENT, LOCATED IMMEDIATELY ADJACENT TO AN EXIST. INLET, CONTRACTOR SHALL EVALUATE THE CONDITION OF THE SAID INLET AND SHALL COORDINATE REPLACING THE TOP PORTION OR THE ENTIRE INLET WITH ENGINEER OF RECORD.
 - CONTRACTOR SHALL SAWCUT PANELS ADJACENT TO EXISTING DRIVEWAYS AT EXISTING SAWCUT LINES & MATCH EXISTING PAVEMENT ELEVATION. (SEE COH DWG NO. 02754-01B, SHT. 43)

- KEY NOTES**
- EXISTING INLET AND MANHOLE RIMMING TO BE ADJUSTED TO BE FLUSH WITH PROPOSED PAVEMENT ELEVATION.
 - MATCH EXISTING TOP OF CURB ELEVATION



APP.	REVISIONS	DATE

SOUTHWEST HOUSTON REDEVELOPMENT AUTHORITY
 TIRZ 20
CobbFendley
TYPE Firm Registration No. F-374
 TIRZ Firm Registration No. 100887
 13430 Northwest Freeway, Suite 1100
 Houston, Texas 77040
 713.462.3242 | Fax 713.462.3252
 www.cobbhendley.com
 JOB NO. 2015-003-01

STATE OF TEXAS
 THOMAS A. ARTZ
 77554
 LICENSED PROFESSIONAL ENGINEER
 2020-10-01

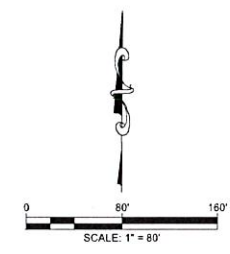
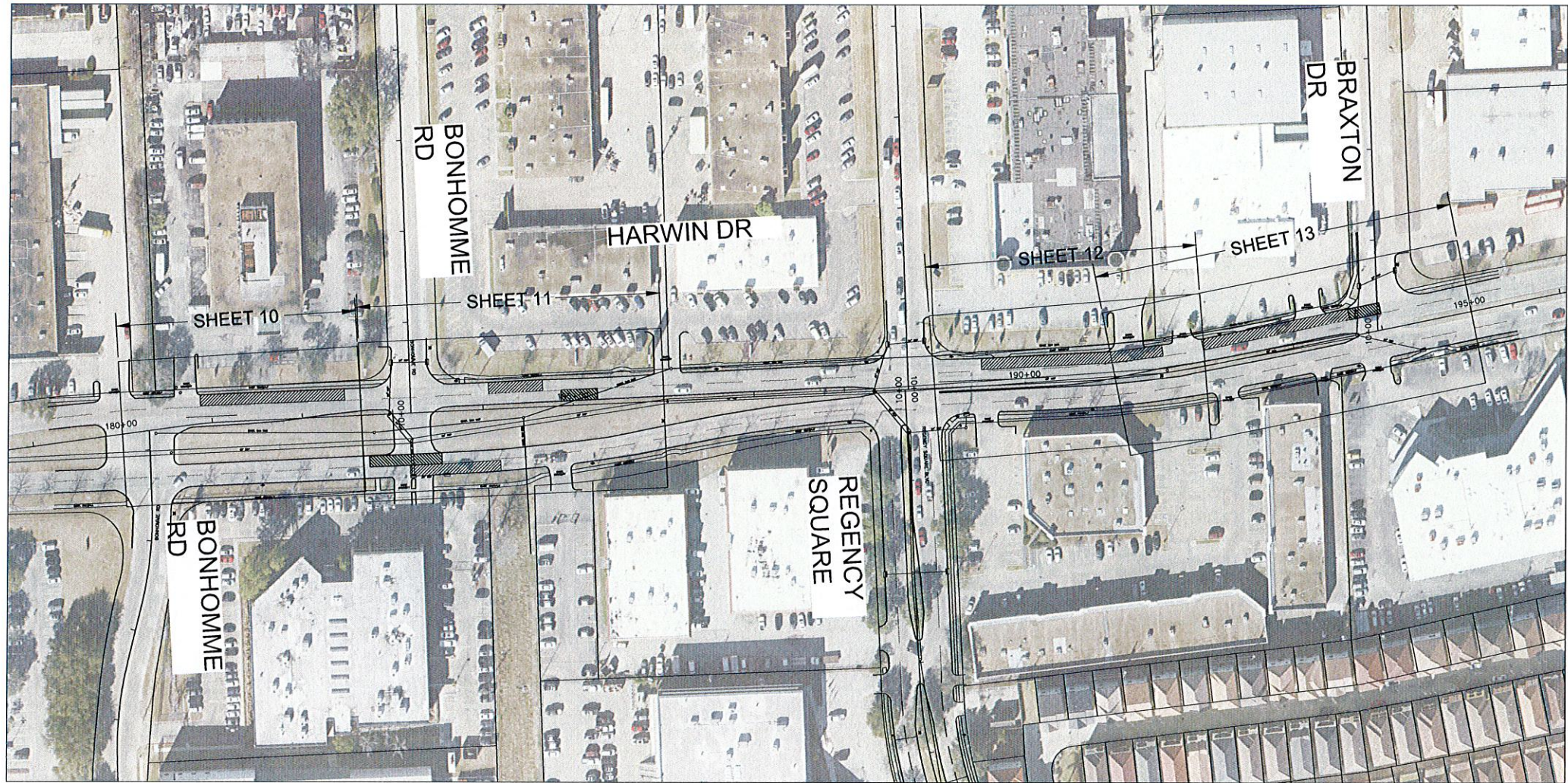
PANEL REPLACEMENT/PAVEMENT REHABILITATION
SHEET LAYOUT HARWIN DRIVE SHEET 1 OF 2

NOTE: CITY SIGNATURES VALID FOR ONE YEAR ONLY AFTER DATE OF SIGNATURES

CITY OF HOUSTON
 HOUSTON PUBLIC WORKS

WATER	STORM WATER QUALITY
WASTEWATER	FACILITIES
STORM	HOUSTON WATER
TRAFFIC/STREET & BRIDGE	TRANSPORTATION AND DRAINAGE OPERATIONS

FILE NO:	FOR CITY OF HOUSTON USE ONLY
DRAWING SCALE	
HORZ :	1"=80'
VERT :	1"=80'
SHEET NO.	4 OF 53



LEGEND	
	PHASE 1 - PROPOSED FULL DEPTH BASE REPAIR CONCRETE PAVEMENT (FDBR) PROPOSED HIGH EARLY STRENGTH CONCRETE
	PHASE 2 - PROPOSED FULL DEPTH BASE REPAIR CONCRETE PAVEMENT (FDBR) PROPOSED HIGH EARLY STRENGTH CONCRETE
	PHASE 3 - PROPOSED FULL DEPTH BASE REPAIR CONCRETE PAVEMENT (FDBR) PROPOSED HIGH EARLY STRENGTH CONCRETE
	REMOVE AND REPLACE EXIST. 6" CONCRETE CURB
	EXISTING STORM/SANITARY SEWER MANHOLE
	EXISTING STORM INLET
	EXISTING FIRE HYDRANT
	EXISTING POWER POLE
	EXISTING LIGHT POLE
	CONTRACTOR SHALL MATCH EXISTING PAVEMENT ELEV. AT SAWCUTS LINES, EXPANSION JOINTS, AT GUTTER LINES & LOW POINT OF EXIST. INLETS.
	INLET PROTECTION BARRIER (SEE DTL. ON SHT. 39)

- NOTES**
- CONTRACTOR SHALL SAWCUT THE PERIMETER OF THE REPAIR LIMITS AS SHOWN ON PLANS. REMOVE THE CONCRETE SLAB AND DAMAGED BASE IF NEEDED. DRILL HOLES FOR LONGITUDINAL AND TRAVERSE TIE BARS OR DOWEL BARS. PROVIDE LONGITUDINAL AND TRAVERSE STEEL CONTINUITY. PLACE AND FINISH CONCRETE AND RESTORE EXISTING JOINTS.
 - CONTRACTOR SHALL DETERMINE THE EXIST. GRADE PATTERN AND SLOPES BEFORE PAVEMENT REMOVAL AND RESTORE TOP OF PAVEMENT TO THE SAME SLOPES AND PATTERNS.
 - HATCHED AREAS REPRESENT THE LIMITS OF PAVEMENT REMOVAL AND INSTALLATION OF NEW REINFORCED CONCRETE PAVEMENT.
 - CONTRACTOR TO MAINTAIN POSITIVE DRAINAGE TO EXISTING INLETS AT ALL TIMES.
 - PANEL REPAIR SHALL EXTEND TO THE NEAREST EXISTING JOINT UNLESS OTHERWISE SPECIFIED IN PLANS.
 - CONTRACTOR SHALL MAINTAIN ACCESS TO DRIVEWAYS.
 - PAVEMENT MARKINGS SHALL BE IN ACCORDANCE WITH CURRENT CITY OF HOUSTON PUBLIC WORKS PAVEMENT MARKING DETAILS.
 - PANEL REPLACEMENT SHALL INCLUDE REPLACEMENT OF IMPACTED CURBS AND GUTTERS.
 - ALL PAVEMENT PANELS SHALL HAVE A MAXIMUM OF JOINT SPACING OF 20 FEET.
 - ALL EXISTING MANHOLE COVERS/FRAME ELEVATION LOCATED WITHIN PANEL REPLACEMENT SHALL MATCH NEW PAVEMENT FINISHED ELEVATION. (SEE DTL. SHT. 44)
 - PLACE 1" BLOCK SOD AT BACK OF PROPOSED CURB.
 - UPON REMOVAL OF EXIST. CONC. PAVEMENT, LOCATED IMMEDIATELY ADJACENT TO AN EXIST. INLET, CONTRACTOR SHALL EVALUATE THE CONDITION OF THE SAID INLET AND SHALL COORDINATE REPLACING THE TOP PORTION OR THE ENTIRE INLET WITH ENGINEER OF RECORD.
 - CONTRACTOR SHALL SAWCUT PANELS ADJACENT TO EXISTING DRIVEWAYS AT EXISTING SAWCUT LINES & MATCH EXISTING PAVEMENT ELEVATION. (SEE COH DWG NO. 02754-01B, SHT. 43)

- KEY NOTES**
- EXISTING INLET AND MANHOLE RIMMING TO BE ADJUSTED TO BE FLUSH WITH PROPOSED PAVEMENT ELEVATION.
 - MATCH EXISTING TOP OF CURB ELEVATION.

APP.	REVISIONS	DATE

SOUTHWEST HOUSTON REDEVELOPMENT AUTHORITY TIRZ 20

CobbFendley
1892 Firm Registration No. F-274
 TIRZ 20 Firm Registration No. 100817
 13430 Northwest Freeway, Suite 1100
 Houston, Texas 77040
 713.462.3242 | fax 713.462.3262
 www.cobbendley.com

THOMAS A. ARTZ
 77554
 LICENSED PROFESSIONAL ENGINEER

J. O. [Signature] 2020-10-05

PANEL REPLACEMENT/PAVEMENT REHABILITATION

SHEET LAYOUT HARWIN DRIVE SHEET 2 OF 2

NOTE: CITY SIGNATURES VALID FOR ONE YEAR ONLY AFTER DATE OF SIGNATURES

CITY OF HOUSTON
HOUSTON PUBLIC WORKS

WATER	STORM WATER QUALITY
WASTEWATER	FACILITIES
STORM	HOUSTON WATER
TRAFFIC/STREET & BRIDGE	TRANSPORTATION AND DRAINAGE OPERATIONS

FILE NO:	FOR CITY OF HOUSTON USE ONLY
DRAWING SCALE	
HORIZ :	1"=80'
VERT :	1"=80'
SHEET NO.	5 OF 53